

Friends of Graves Park



Charity no: 1080407

Winter 2021-22

Currently flowering in the arboretum:
The hamamelis mollis planted three years ago has at last decided to blossom this January (sulphur yellow flowers). The mahonia bealie is currently producing a wealth of yellow crown blossom; 3 new plants have been introduced during December and these also have some blossom.

for new good quality floribunda roses, lavender and fertilizer. FOGP successfully applied for funding from the council's Ward Pot fund and received £1000 which, together with the funds from FOGP, paid for sufficient plants to refurbish the whole rose garden. It was very good to be able to work with the new management of Graves Park to the benefit of the Rose Garden, which is very much used by large numbers of park users.

The centre bed is now planted with Queen Elizabeth floribunda roses in honour of Her Majesty the Queen.



Work on the Rose Garden November 2021

FRIENDS OF GRAVES PARK
c/o
139 Mount View Road
Sheffield
S8 8PJ
Tel: 0114 2550615
www.gravespark.org
<https://friendsofgravespark.org/>
friends@gravespark.org
©Friends of Graves Park 2022

Finding Lost Norton Park: Project Plans

The Friends were unsuccessful in our application to the National Lottery Heritage Fund, for our new project, "Finding Lost Norton Park: Digging Deeper for All", which will build on the results of our previous project, in 2019. The NLHF have asked us to include more diverse groups; with this in mind we are actively seeking groups to join us and intend to re-submit our application in the very near future. As you know, the first project uncovered evidence of the possible national importance of Graves Park in terms of its preserved historical and archaeological landscape.

Rose Garden Refurbishment

SCC Park Officers and FOGP agreed the rose garden needed refurbishment. SCC would take out the diseased box hedging, replace the roses and add new compost and organic matter. FOGP paid

Introduction from the Chairman

Welcome to the Friends of Graves Park's winter newsletter. Since our last newsletter and after failed attempts to meet with and discuss our plans for the Arboretum Extension with SCC, we have launched our petition "Allow FOGP to Complete the Arboretum on the Old Nurseries Site in Graves Park Now" on the Change.org website. At the time of writing we are heading for 1000 signatures and are continuing to spread the word. If you have not yet signed, please do!



Chantreyland Meadow Frog Ponds



Louise Haigh with the Volunteers

A meeting originally planned for 17th December last year was postponed until March 2022. While we are disappointed, we are not surprised, as this is the pattern we have experienced for 23 years. In the meantime, we have requested information about the "heavy machinery" which the council say they need to store on the Nursery site. We would like to know where it is being kept now and why it can't stay there, as it isn't being stored currently on the next section of our arboretum.

FOGP volunteers met Louise Haigh MP on site to discuss our plans to restore the next section back to parkland. Louise was

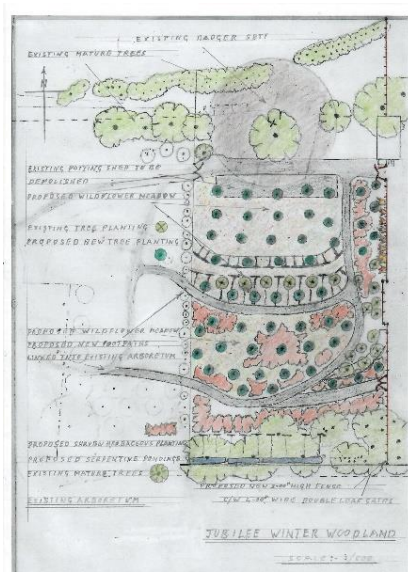
very understanding and offered her support, writing to the council to urge them to meet with us.

Arboretum Extension (Proposed Winter and Spring Woodland): After meeting Louise to view this area of the despoiled ground, FOGP considered it would be worthwhile producing a scheme for the area. A scheme for landscaping has been drawn up, with tree planting and a footpath layout. This includes a specification of development works with a detail of types of tree, shrub, herbaceous and bulb planting requirements. However, until SCC decide to allow FOGP to restore this despoiled area, we cannot progress the proposals further, although we are now prepared.



Site of Arboretum Extension

The view of the site from the completed section of the arboretum shows very little being kept there at the moment. In a letter to the Sheffield Star, Councillor Alison Teal refers to the area with the glasshouses on; this area is not included



Arboretum Extension Scheme

in our plans for the arboretum. The boundary of the arboretum extension goes up to the wall before the glasshouses.

The council have said that one of the obstacles is a lack of funding and the Friends of Graves Park are sympathetic to this. We will continue our fundraising campaign and are confident that, with the help of local people, we can fund this project. One way or another, we will complete our restoration of this site! In the meantime, we have written to the Charity Commission regarding the situation and have made a Freedom of Information request, to find out what SCC's plans are for this piece of charitable land.

Chantreyland Meadow and Arboretum

Recent heavy wet snow combined with strong winds caused considerable damage to mature trees forming the framework, mainly in the Meadow by the Serpentine Walk. Three trees are still in a dangerous condition and were reported to SCC, as dealing with these is beyond the capacity of volunteers.

Drainage: The blocked gully at the entrance from NPV has at last been cleared of silt, now taking all the surface drainage water from the area, so there is no longer an overflow down the drive.

Pondings: All these are full of water, the exposed Serpentine stream continues to flow with good quality water. The oval dipping pond and three frog ponds are all overflowing currently. We will consider installing a liner in at least one, as the bases are porous, affecting the success of the frog spawn.

Fernery: A collection of five beds surrounded by logs have been planted with Meadow Ferns and 40 evergreen ferns are currently being grown for planting a border around each, with the two year old seedling bluebell bulbs planted within each bed.

Within the arboretum a specimen silver birch originally supplied and planted by Lawrence Wolstenholme has had the crown destroyed during the gales, however, with a little conservative

pruning, some of its shape can be restored.

The volunteers did an excellent job of clearing up after the storm and as poor road conditions prevented any other help getting to the site, they persisted with a major branch clearing.

The Arboretum (Death Bed): A shrub bed within the arboretum has always been a difficult place for any number of plants to survive for long. The achillea planted there have reverted back and whilst they survived it has not been successful. Our volunteers have removed most of the plants and refurbished the bed, removing contaminated black ash and replacing it with good quality topsoil and a bark mulch finish. New herbaceous plants currently being grown by FOGP will be planted there this spring, hopefully with a better chance of survival.



Mahonia Bealei